

STUDY AT
MANDELA UNI
2022

Gqeberha and George:

places where you learn,
live and love life.

Your education is the most important reason to go to university, but this doesn't mean you shouldn't study in a place that's full of attractions, where you can enjoy your free time.



GQEBERHA

Formerly known as Port Elizabeth, this friendly city is positioned along 40km of Eastern Cape coastline.



GEORGE

Sitting at the foot of the Outeniqua Mountains, George is the hub of the beautiful Garden Route.

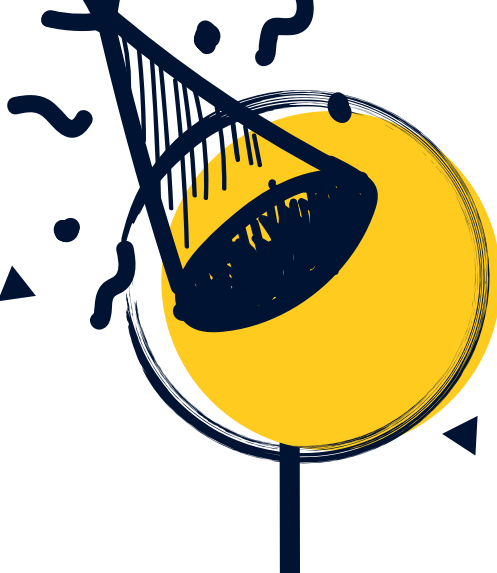


Beaches and nature

The university's main campus is situated on a nature reserve, with four campuses located in Summerstrand, home to several beautiful beaches.

The campus is located between mountains and the ocean, offering forests and fynbos views. Some of the country's best-known beaches are a short drive away from George.

Social and sport



From popular beachfront festivals and live music nights, to Ironman, triathlons, trail runs, and more - there's plenty to keep you active and entertained.

Bird watching, golf, hiking, bungee jumping, mountain biking, music events and food festivals, there's an activity for every kind of fun seeker.



Art and culture

Get your culture fix by visiting: the South End Museum, the PE Opera House, Route 67, Nelson Mandela Metropolitan Art Museum and our own art gallery at our Bird Street Campus.

As the sixth oldest city in South Africa, George has many interesting historic landmarks and eclectic attractions that entice both local and international travellers.

Eat and drink



There are a large range of restaurants and bars along the beachfront, while the lower valley is a hub for great dining and entertainment, which includes the Richmond Hill area, with its street café vibe and local breweries.

With over 100 cafés and restaurants, you're bound to find somewhere that satisfies your taste and budget. There are also interesting farmers markets in the area for the adventurous to explore.



Locations close by

Gqeberha is close to: Jeffreys Bay, Makhanda, Bathurst, Port Alfred, Kenton-on-Sea, St Francis Bay and Cape St Francis.

George is close to: Wilderness, Sedgefield, Knysna, Plettenberg Bay, Oudtshoorn and Mossel Bay.



Whether you choose Gqeberha or George, start your student journey at Nelson Mandela University – a vibrant, multi-cultural, dynamic African university.



We look forward to welcoming you next year!